

# **Remote Vehicle Radio Operation**

**Quick Deployment for EMCOMM**

**Craig J Coley, WB5KUO**

# Vehicle Installation

## Required Components

- Remote Vehicle Starter
- IC-7100 All Mode Transceiver  
80m-10m, 2m, 70cm
- Autocoupler for multi band operation
- 36AH LiFePO4 Battery with  
Bluetooth Monitor and Wireless Relay
- AC Supply and Power Pole panel
- 64 Bit Windows 10 Computer
- WiFi Access Point for remote access
- GPS Receiver for Winlink
- Bluetooth headset for driving



# Vehicle Installation- Spare Tire Compartment

Computer

**DOWELL**  
24pcs  
HOUSEHOLD TOOL KIT  
MADE IN CHINA

Battery, Switch, Fuse

Motorcycle and Powersports  
Starter Battery

AC Supply

Power Pole  
Fused Panel

ICOM  
AH-4  
Antenna  
Coupler

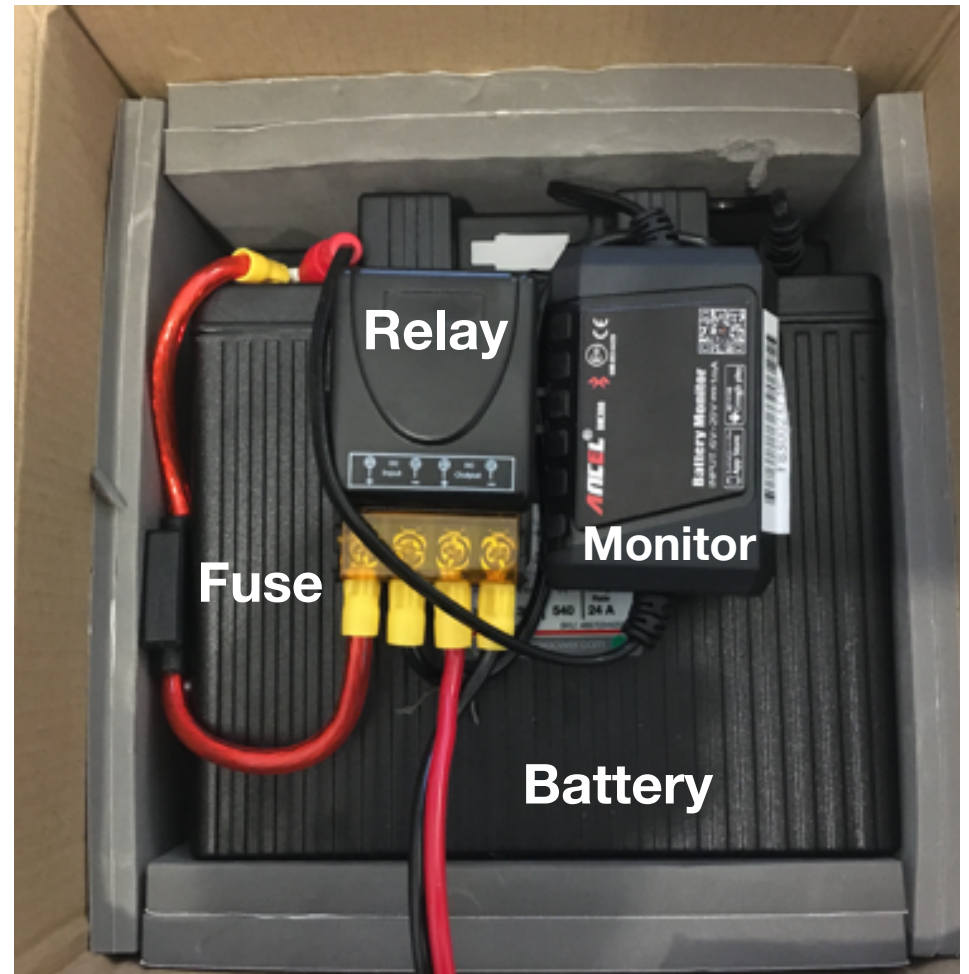
ICOM  
IC-7100



# Vehicle Installation

## Battery Subsystem

- 36aH LiFePO4 battery
- Locally fused at 30A
- Bluetooth Voltage Monitor
- Wireless 40A Relay with Keyfob
- Installed in Padded Battery Shipping Box





# Vehicle Installation

## Windows Computer

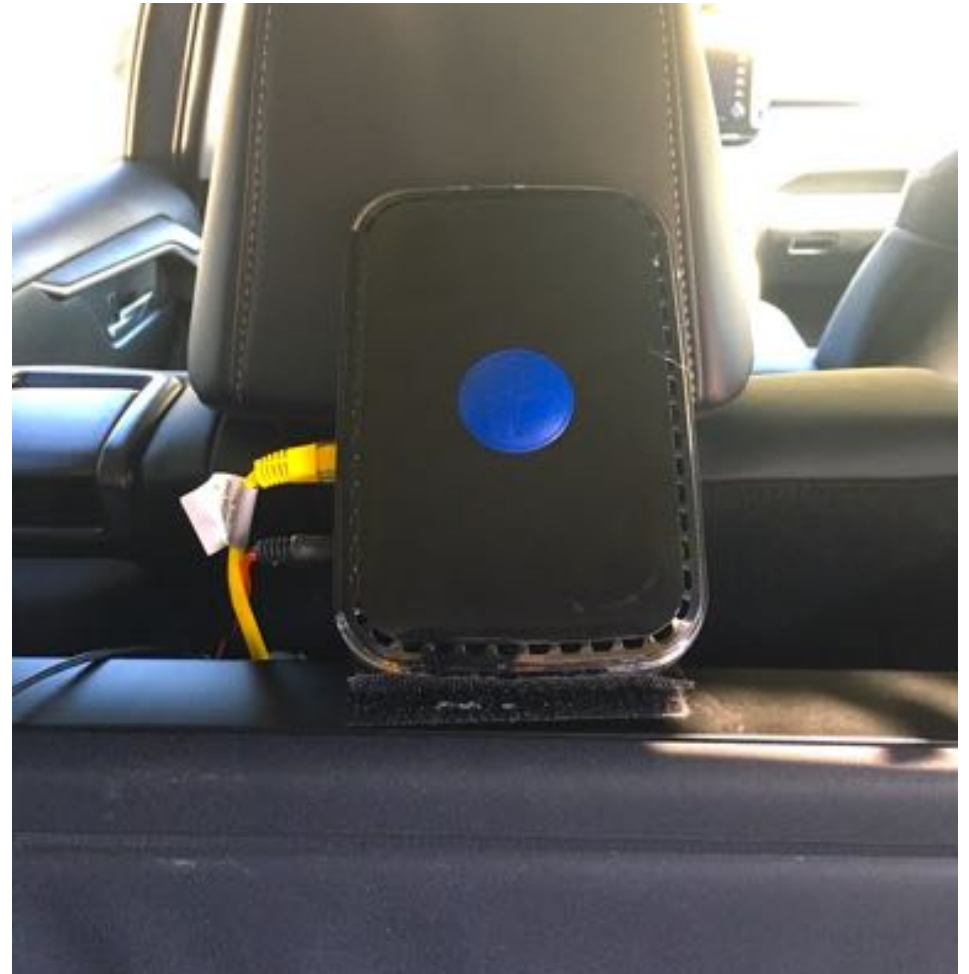
- Minix Z83-4 12 VDC Intel Atom running Windows 10 Pro 64 Bit
- Standard user setup with no password for auto-boot
- GPS Receiver for Winlink
- Installed Software:  
ICOM RS-BA1 Remote Utility  
WSJT-X/JTAlert  
FLRig/FLDigi  
Winlink Express  
N3FJP ACL
- Bluetooth headset interface



# Vehicle Installation

## WiFi Access Point

- NetGear 12 VDC Access Point
- Ethernet connection to PC
- Allows Remote Control via LAN
- Velcro Mounted at 45 Degrees for equal HOR/VER polarization



# Remote Control

## Required Components

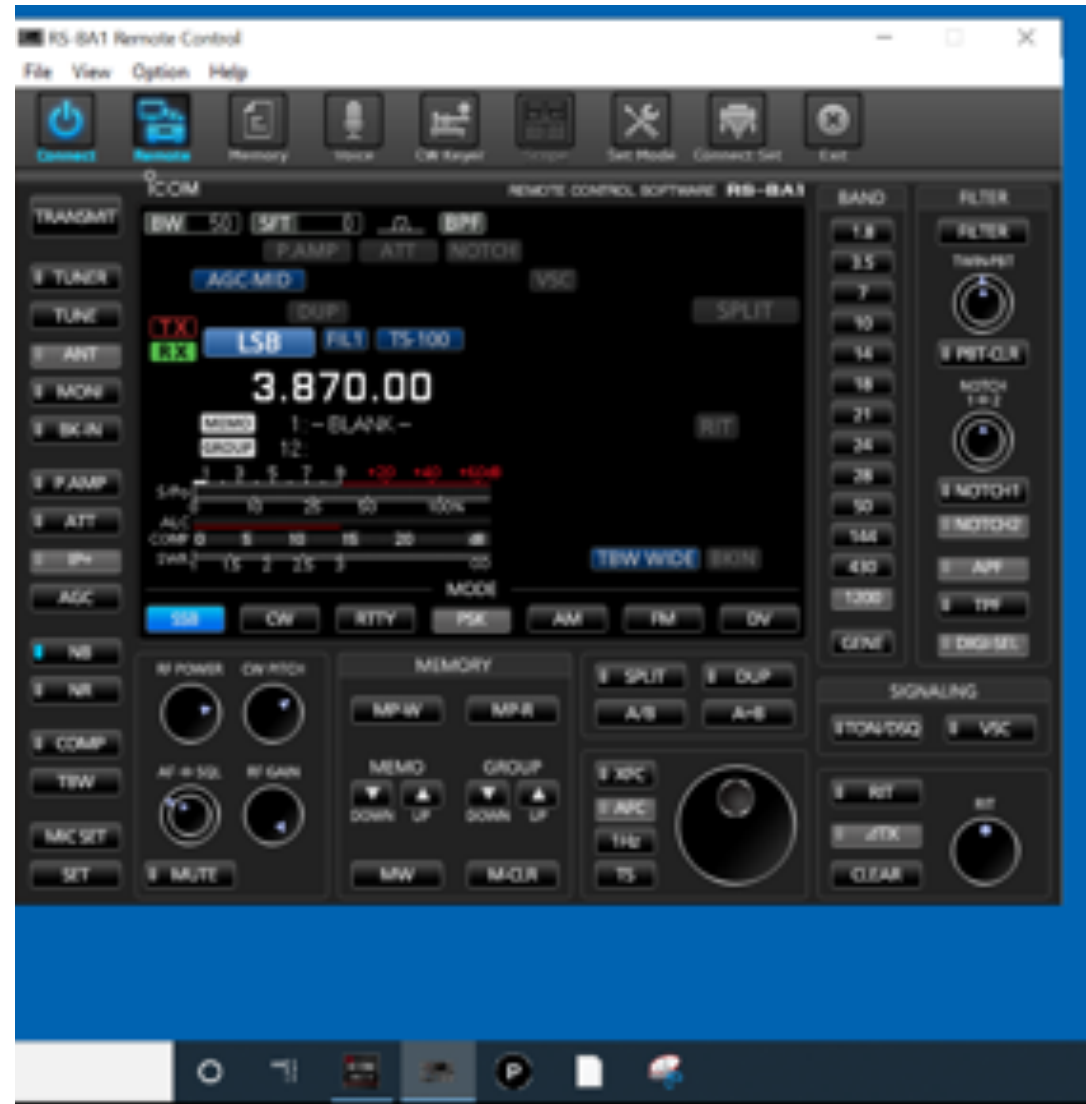
- 64 Bit Windows Computer
- USB WiFi Transceiver
- RS-BA1 Software for Voice
- RealVNC Software for Digital
- 20AH Lithium Battery (7 Hours)
- Keyboard/Monitor
- USB Speaker/Microphone
- RC-28 USB Remote Dial



# Remote Control

## Voice Operation

- ICOM RS-BA1 Software
- Interfaces with RC-28 control
- Allows full rig control
- Best solution for voice

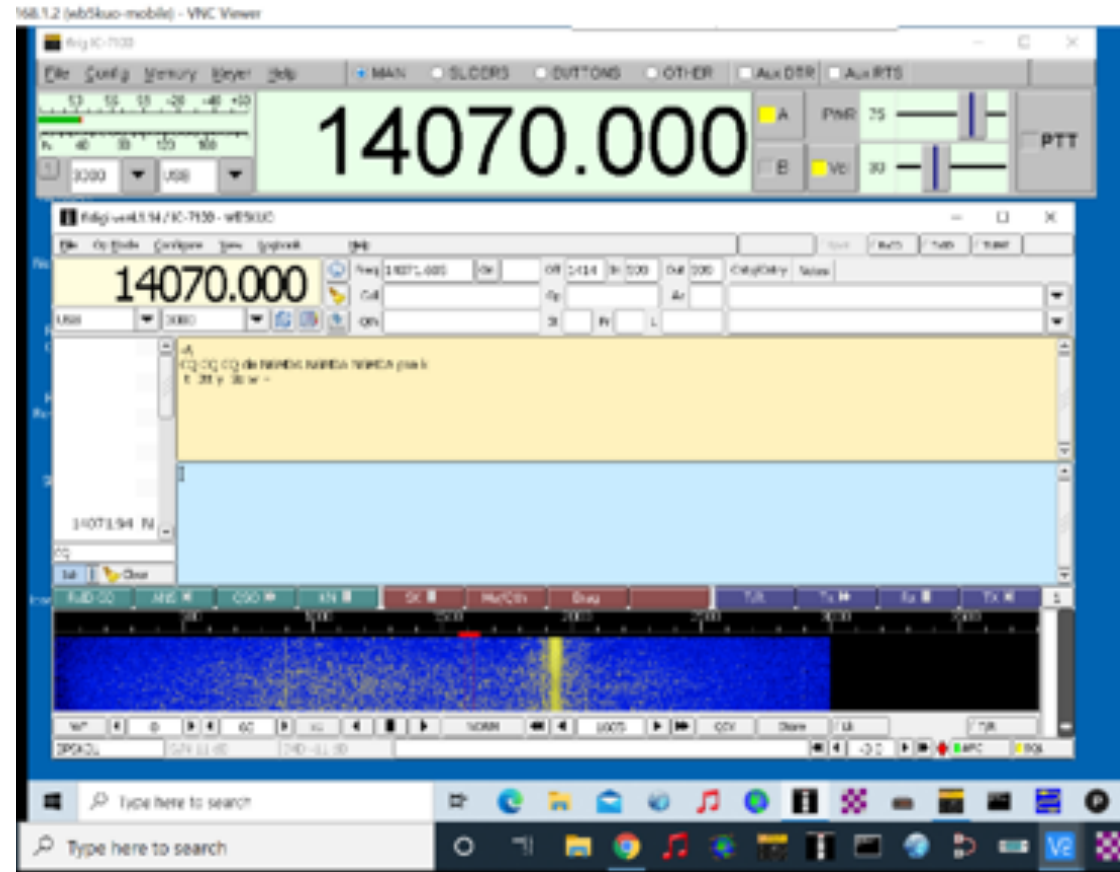




# Remote Control

## Digital Modes

- Remote Desktop with RealVNC
- FLDIGI, WSJT-X, Winlink Express
- Audio Compression in RS-BAT software distorts the audio too much for digital modes Allows digital software to directly control the transceiver



**Questions?**